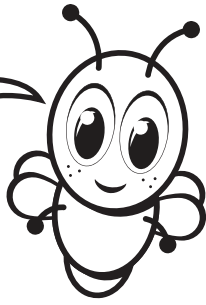


# Blinky's Family Challenge

I obey ... because I belong to God!



## I Belong to God

Noah obeyed God because Noah was God's friend. Noah belonged to God! You can belong to God, too, when you ask Jesus to forgive you, be your leader, and your best friend!

### You'll Need

- Objects found around the house

### Directions

1. Show one object.
2. Ask and answer this question together, "Who does this belong to?"
3. Repeat with the other objects.
4. Ask, "Who do you belong to?"
5. Everyone answers, "God!"

## Review Time!

### Say With Me Ages 2-3

1. Say Together: **I can obey!**
2. Say Together: **I belong to God!**

### Q&A Ages 4-Kindergarten

1. **What do you need to do to belong to God?** Ask Jesus to forgive me, be my leader, and my best friend.
2. **Why should you obey your parents and leaders?** Because I belong to God



Lead your family through the Bible Plan *Two by Two* on the YouVersion Bible App.

[www.bible.com](http://www.bible.com)

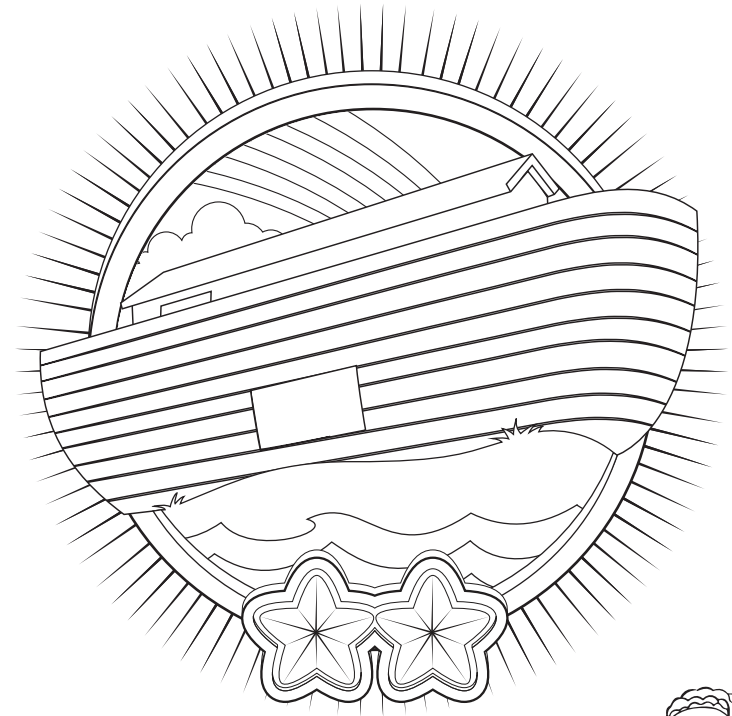


[www.lifekids.tv](http://www.lifekids.tv)

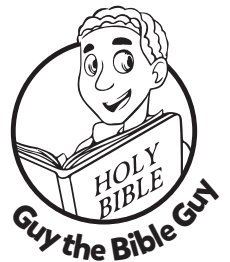
# Two by Two

## Noah and the Flood

### Week Two



Practice the Bible verse about obeying with your family!

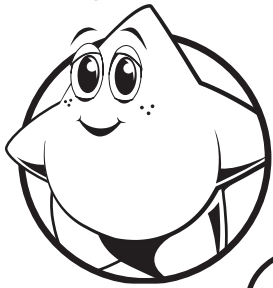


Interact with God's Word through the Bible App for Kids, activities, videos, coloring sheets, parent resources, and more!  
[www.BibleAppForKids.com](http://www.BibleAppForKids.com)



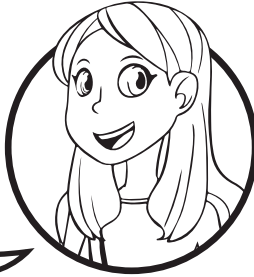
Follow LifeKids to sing along with this month's song, *I Belong to God*. [go2.lc/lifekidsmusic](http://go2.lc/lifekidsmusic)

Shine

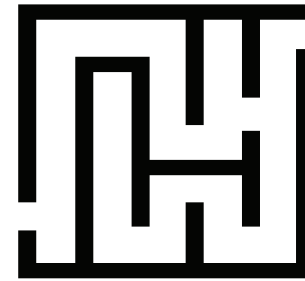


**Question:**  
Hey friends!  
**Why should you  
obey?**

Emily



**Answer:** Say it  
with me! **I'm God's  
friend, so I obey!**



**Guy the Bible Guy**

The Bible is God's book for you!  
You can trust it's right and true!  
*Help Blinky find his Bible.*

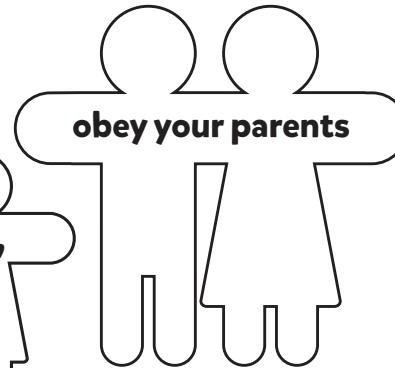


**When I make Jesus my leader, I belong to God!**

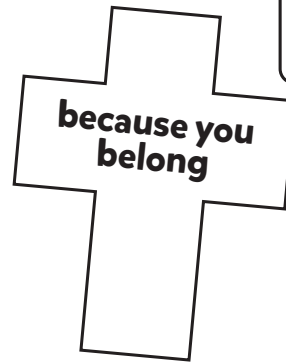
*Put a sticker above each part of the Bible verse when you say it.*



**Children,**



**obey your parents**



**because you  
belong**



**to the Lord ...**